

# StorageVET® Data Import User Guide V2.0

## StorageVET V1.1

Published: 3/8/2018

Electric Power Research Institute (EPRI)

Data can be imported into StorageVET only from an excel document.

### Steps:

- 1) From the StorageVET home page, click on “Data/Scenarios” tab. Click on “Import Data” subtab

EPRI | ELECTRIC POWER RESEARCH INSTITUTE Storage Value Estimation Tool: StorageVET® V1.1

ABOUT/HELP | PROJECT SPECS | GENERAL SETTINGS | TRANSMISSION & DISTRIBUTION | CUSTOMER | FINANCIALS | RESULTS | **DATA/SCENARIOS**

Case Spreadsheets | **Import Data** | Import Retail Tariff | Review and Delete Data | Export results | Scenarios

Import data from spreadsheet

**Step 1**  
Select file: Please select  
Open file: [ ] Calc: [ ]

**Step 2**  
Select a worksheet: No file selected  
View data table from sheet: [ ] Calc: [ ]

**Step 3**  
Select the data type: Please select

**Step 4**  
Import selected data: [ ]

Site Load  
System Load  
Day-Ahead Energy Price  
Real-Time Energy Price  
Flexible Ramp Price  
PV Generation Profile  
Loss of Load Probability  
Deferral Load  
VARs Reservation  
Thermal Load  
Ancillary Services  
Instructions in StorageVET V1.0 Data Import User Guide

Default templates can be found with these hyperlinks

Powered by **analytica** Beyond the Spreadsheet

- 2) Select file to upload or choose an Excel Spreadsheet that exists in the current directory

EPRI | ELECTRIC POWER RESEARCH INSTITUTE Storage Value Estimation Tool: StorageVET® V1.1

ABOUT/HELP | PROJECT SPECS | GENERAL SETTINGS | TRANSMISSION & DISTRIBUTION | CUSTOMER | FINANCIALS | RESULTS | **DATA/SCENARIOS**

Case Spreadsheets | **Import Data** | Import Retail Tariff | Review and Delete Data | Export results | Scenarios

Import data from spreadsheet

**Step 1**  
Select file: Please select  
Open file: Please select

**Step 2**  
Select file to upload  
Select a worksheet: Ancillary Services Price Import Template V1  
View data table from sheet: Batt\_Peaker\_Substitution\_Use\_Case.xlsx

**Step 3**  
Select the data type: Please select

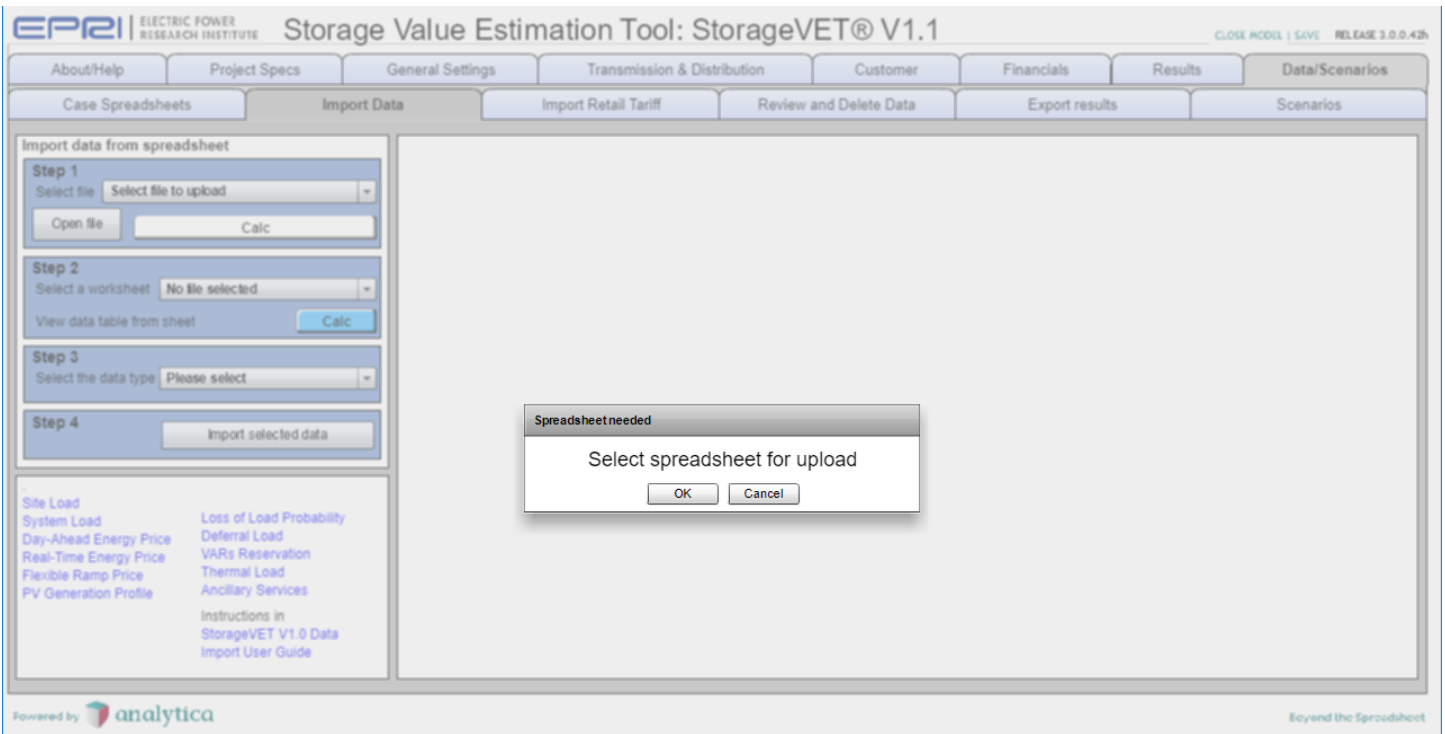
**Step 4**  
Import selected data: [ ]

Site Load  
System Load  
Day-Ahead Energy Price  
Real-Time Energy Price  
Flexible Ramp Price  
PV Generation Profile  
Loss of Load Probability  
Deferral Load  
VARs Reservation  
Thermal Load  
Ancillary Services  
Instructions in StorageVET V1.0 Data Import User Guide

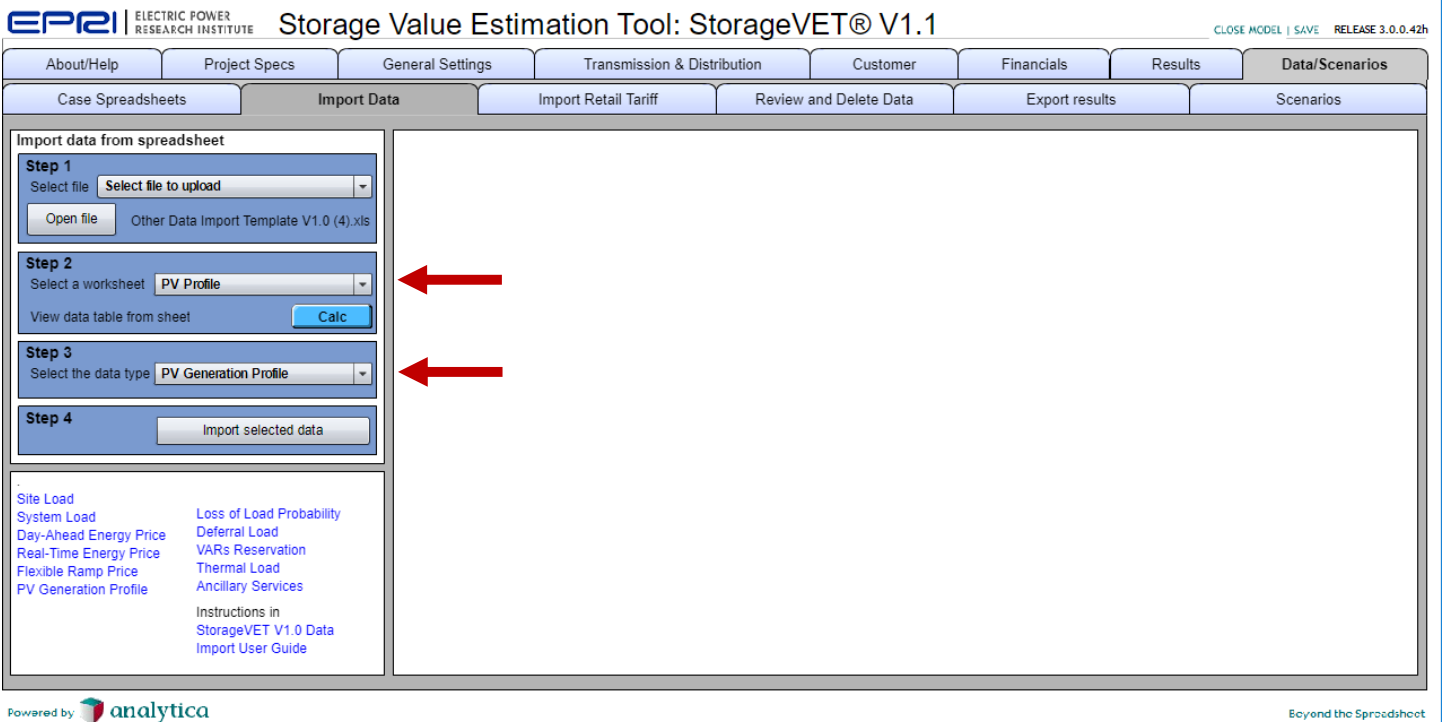
Select file to upload from your local computer  
OR Select file from current directory in StorageVET

Powered by **analytica** Beyond the Spreadsheet

3) If uploading from local computer, select spreadsheet for upload



4) Individual sheets from the selected spreadsheet will appear in Step 2. Select the worksheet you wish to upload, and select the corresponding “Data Type.” For instance, upload “PV Profile” and select data type as “PV Generation Profile.” If you wish to view the data, click “Calc” next to View data table from sheet



5) If the data looks correct, click "Import Selected Data" to complete import

Storage Value Estimation Tool: StorageVET® V1.1

Import Data

Import data from spreadsheet

Step 1: Select file to upload

Step 2: Select a worksheet: PV Profile

Step 3: Select the data type: PV Generation Profile

Step 4: Import selected data

View data table from sheet

Sample Rooftop PV Generation Profile 2015

Time	Generation
1/1 00:00	0.0000
1/1 01:00	0.0000
1/1 02:00	0.0000
1/1 03:00	0.0000
1/1 04:00	0.0000
1/1 05:00	0.0000
1/1 06:00	0.0000
1/1 07:00	29.6241
1/1 08:00	433.9086
1/1 09:00	1512.3946
1/1 10:00	2929.3006
1/1 11:00	1977.3805
1/1 12:00	2707.1190
1/1 13:00	2997.5916
1/1 14:00	2468.8440
1/1 15:00	584.6328
1/1 16:00	0.0000
1/1 17:00	0.0000
1/1 18:00	0.0000
1/1 19:00	0.0000
1/1 20:00	0.0000

6) If there are many worksheets from the same Excel file, click "No" and repeat Steps 4-5 until the last data has been uploaded

Storage Value Estimation Tool: StorageVET® V1.1

Import Data

Question

You successfully imported data table 'Sample Rooftop PV Generation Profile 2015' of type 'PV Generation Profile' from sheet 'PV Profile' of spreadsheet 'Other Data Import Template V1.0 (4).xlsx'  
Would you like to close this file?

Yes No

7) When the last set of data has been imported, click "Yes" and close out import data spreadsheet.