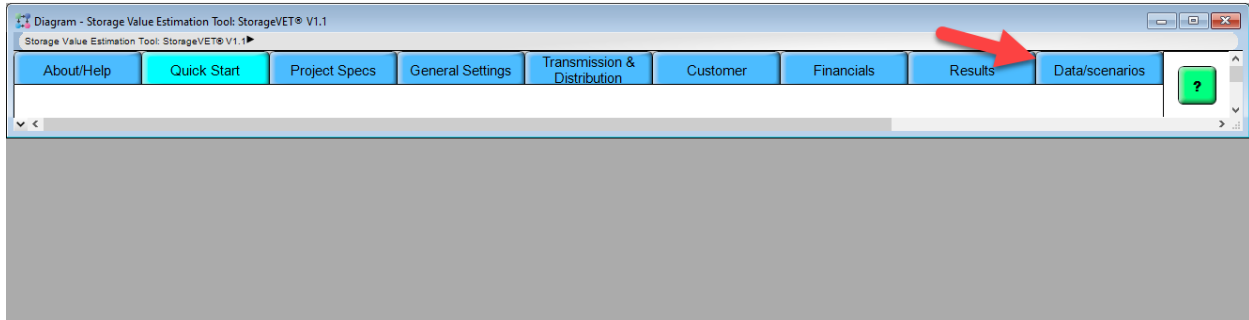


Importing Retail Tariff Data into StorageVET

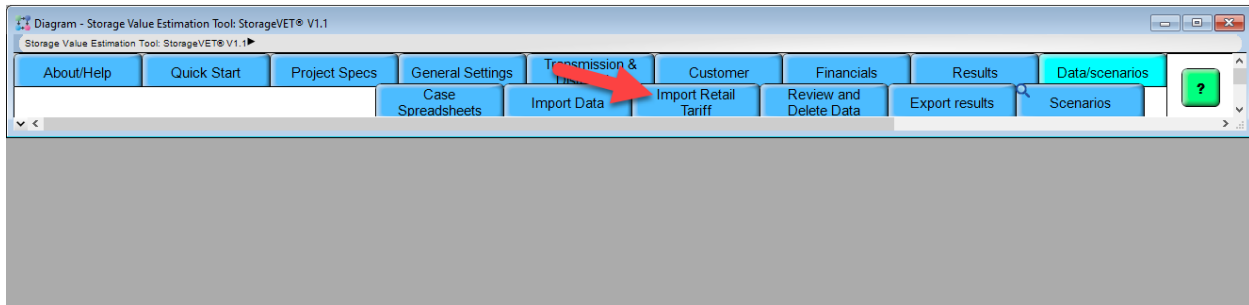
Data can be imported into StorageVET only from an Excel document following a precise template. You can download the template here: [Retail Tariff Template V1.0](#)

Steps:

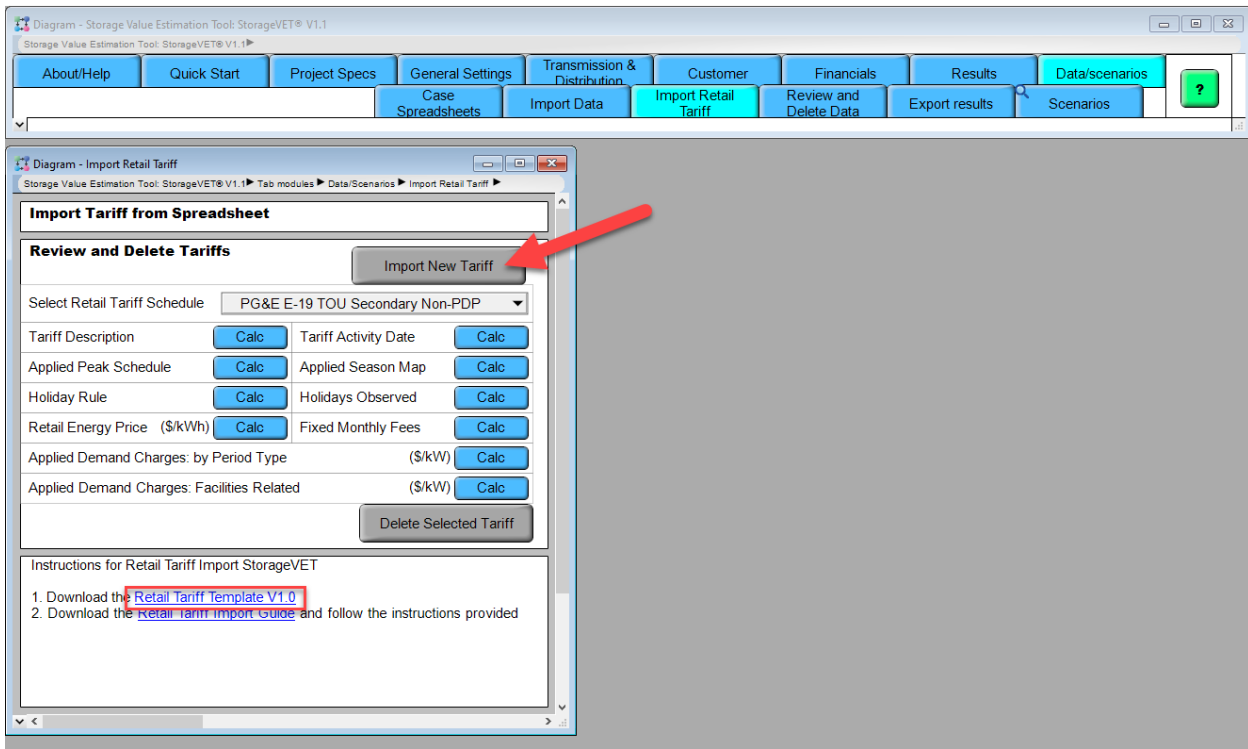
- a) Click on the **“Data/Scenarios”** tab.



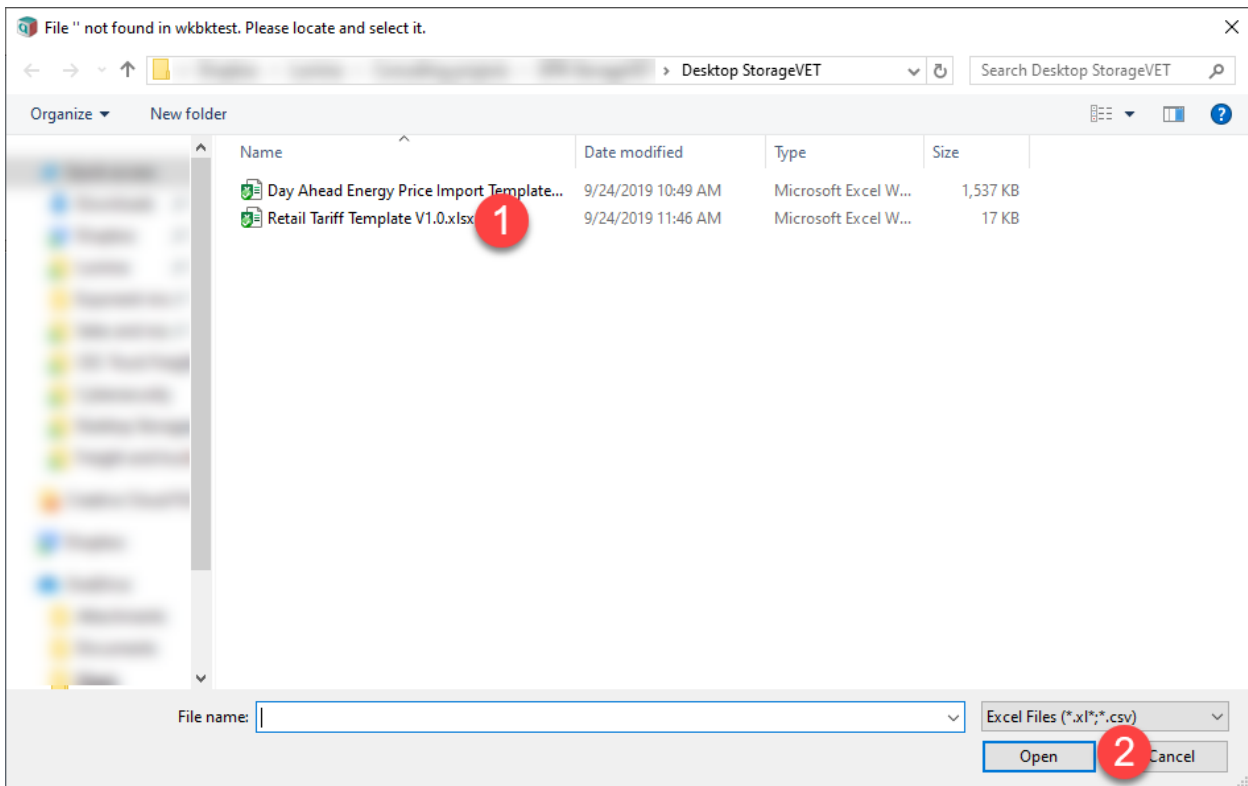
- b) Then, click on the **“Import Retail Tariff”** subtab



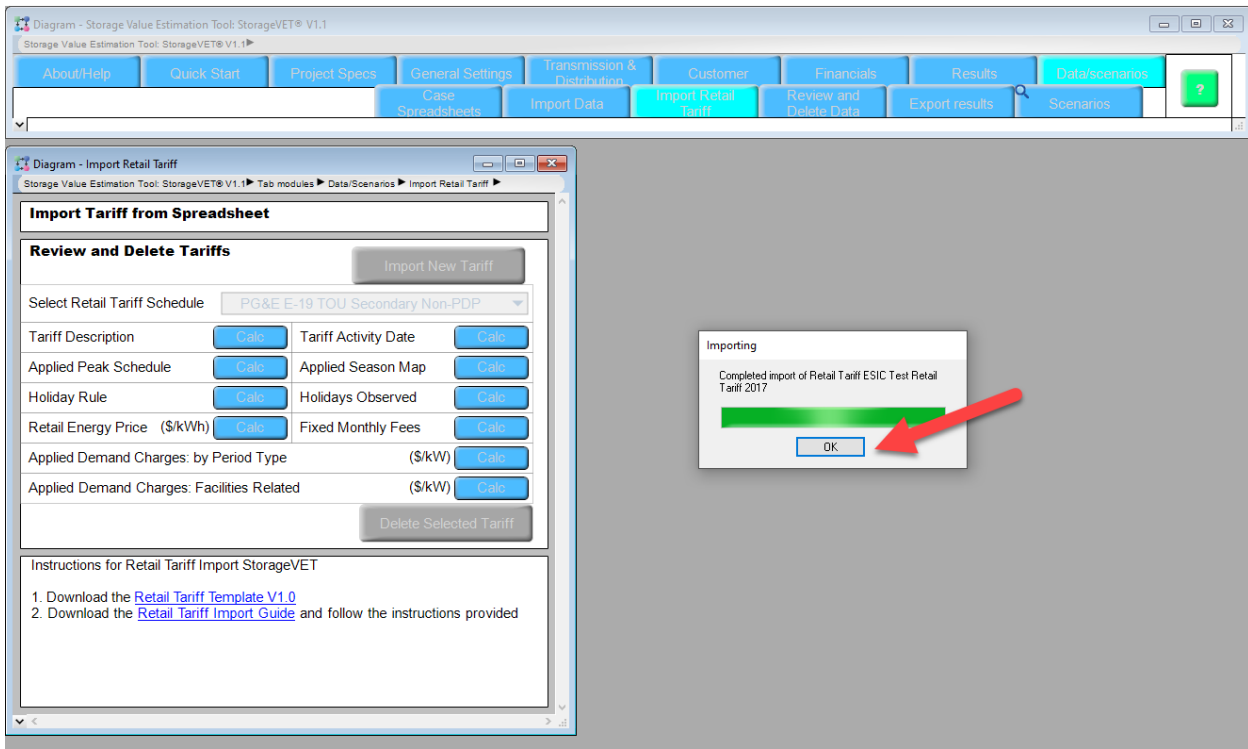
- c) Next, click on **“Import New Tariff”** button. Note that you can also download the data template using the hyperlink included at the bottom of this Import Retail Tariff window.



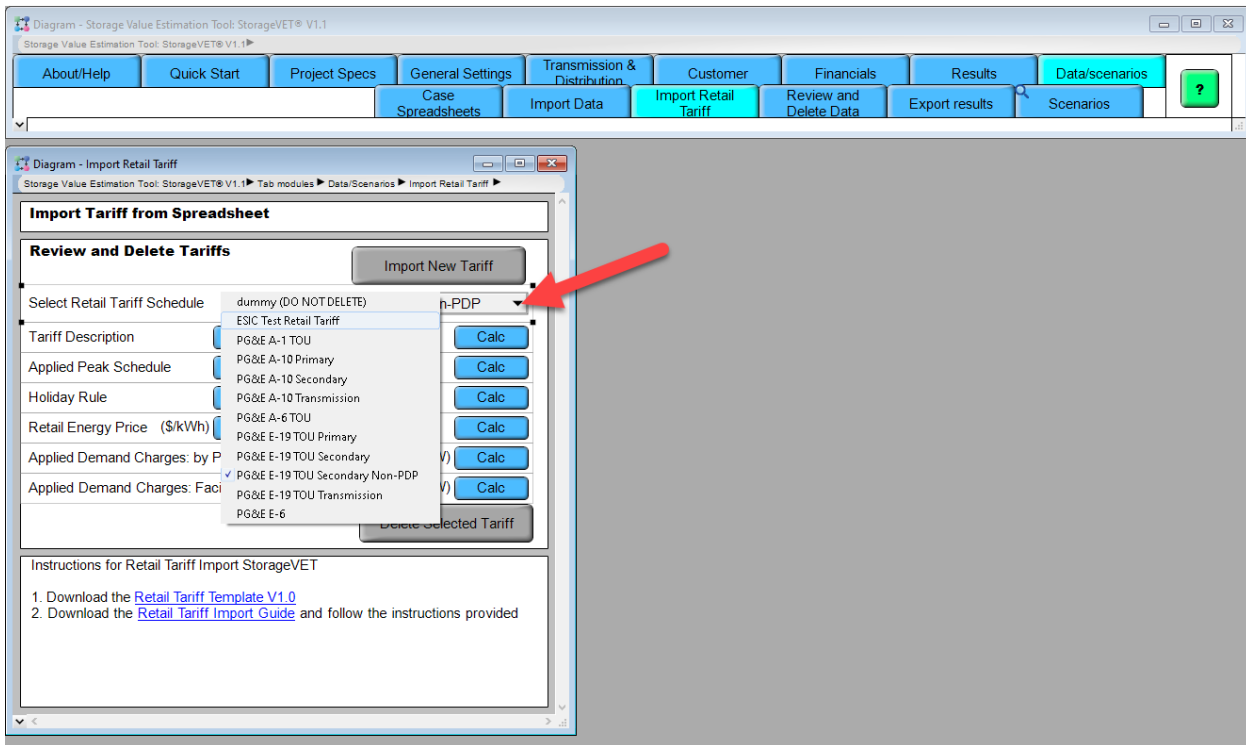
d) Select the correct Excel workbook, then click “Open” button on the “Spreadsheet needed” dialog box



e) After the model successfully imports the retail tariff data, you'll be presented with a confirmation note. Press “Ok”



- f) To verify if the data file has been imported, click on the “**Select Retail Tariff Schedule**” drop down list box and select the tariff you had just imported (in this example, *ESIC Test Retail Tariff*, which is what the template data set is called)



- g) Click on the **Retail Energy Price “Calc”** button to confirm that the energy price matches with the data you tried to import.

Mid Value - Retail Energy Price

Mid Value of Retail Energy Price (\$/kWh)

Simulation Years: 2017

Season: [Dropdown] Totals: []

	Off - Peak	Partial - Peak	On - Peak
Winter	0.00350	0.117078	0.00000
Summer	0.149611	0.22639	0.55354

This Retail Energy Price window will appear when you click the Calc button - check to make sure the data are as you expect.

h) If you want to remove tariff data, select the dataset you want to delete using “Select Retail Tariff Schedule” and press the **“Delete Selected Tariff”** button.

Import Retail Tariff

Select Retail Tariff Schedule: ESIC Test Retail Tariff

Tariff Description [Calc] Tariff Activity Date [Calc]

Applied Peak Schedule [Calc] Applied Season Map [Calc]

Holiday Rule [Calc] Holidays Observed [Calc]

Retail Energy Price (\$/kWh) [Result] Fixed Monthly Fees [Calc]

Applied Demand Charges: by Period Type (\$/kW) [Calc]

Applied Demand Charges: Facilities Related (\$/kW) [Calc]

[Delete Selected Tariff]